



LABELMANAGEMENT™

ENTERPRISE LABELLING SOLUTION FOR SAP®

EXCELLENT IN LABELLING

The screenshot displays the OPAL LBM Administrator interface, version 6.0.0 B 31.03.2016 Development. The main window shows a tree view of label classes on the left and a detailed configuration panel on the right. The configuration panel includes fields for Label class, SAP label identification, and Service condition settings. Below the main window, several overlapping label design templates are shown, including:

- FOOD LABELLING:** REGULATION (EU) No 1169/2011 - Allergens. Includes ingredients, nutrition facts, and allergen information.
- GHS/CLP 2015:** Classification, Labelling and Packaging (CLP) regulation label. Includes hazard pictograms, signal words, and safety phrases.
- UDI LABEL:** MEDICAL DEVICE 2015. Includes a barcode, UDI number, and manufacturer information.
- 600:** A label with a large number '600' and a barcode.
- VDA ARTICLE 2015:** A label with a barcode and VDA article number.
- ABC123:** A label with a barcode and the text 'ABC123'.
- ABC123:** A label with a barcode and the text 'ABC123'.





CENTRALIZED SOLUTION

MANAGEMENT IN SAP®

Our SAP® add-on is designed to manage label processes and give them a structure according to your organisation. Labelling data are collected in catalogues which can be easily enhanced without development know-how.

The centralized transaction, called „Administrator“, manages all label layouts and their content (master data, transactional data, including classification and also Labelling specific content). We support language dependent content, as well as multi-language labels.

LABEL DESIGN

We work with the most common and professional label layout software vendors. EuroPlus with NiceLabel and Seagull Scientific with BarTender are fully integrated in the solution.

They provide all the required tools to create labels according to your specification and support standards such as GS1, HIBC, CLP (GHS), VDA Labelling and many more. Labels with RFID tags are supported as well.

There are no restrictions to the design: full unicode support for texts, True- and Open-Type fonts, including special characters and

With our additional „Matrix Maintenance“, we enable you to define additional decision tables to enhance label specific data or apply rules for label content.

To fulfill the GHS Labelling requirements, we offer the additional „EH&S master class“, to collect data out of the SAP® EH&S module. EHS phrases, symbols, ingredients and dangerous-goods content can mapped to the field catalogue of your label. The dynamic content can easily be applied to label layouts.

printer vendor independent fonts, inline formatting (e.g. highlighted allergens). RTF text support will make the text design quite comprehensive. Double-sided printing or colored labels are supported, depending on your printer model.

Images can be embedded into layouts or printed dynamically at runtime. The files themselves can be stored externally.

Different counters and date/time formats can be applied directly to your label-layout or defined in the SAP® system.

COMPREHENSIVE

QUALITY ASPECTS

Optimized for your internal quality processes, our system integrates the revision control system of the label layout software into SAP®.

Different revision modes are applicable and you are able to handle drafted and released layouts in our SAP® transactions.

To approve labels, you can use integrated workflows. With the integrated simulation mode, designers get a live preview of the final label.

All our objects in SAP® include audit trails and have a separate version management.

They will be transported with your standard SAP® Transport Management System.

Different versions of labels and matrixes can be activated by business department and rollbacks can be done easily without transporting.

The OPAL LABELMANAGEMENT™ development team is working with a GAMP and ISO-9001 compliant quality management system and we provide all the required documentation for your quality assurance.

PROCESSING

Customers can easily develop queries for specific label content in SAP® ABAP. Our master class offers a full set of useful functions to get a strict observance of the structure over all label processes and developments.

We provide examples and a comprehensive development guide. Process specific or general conditions control the usage of label layouts, printers, copies or languages.

You have complete flexibility on the application and you can simply define your own hierarchical rules e.g. country-, product- or customer- specific labels.

The multi label print mode ensures the order of printouts and allows users to define different layouts for each single print job. Our application generates detailed information about print job execution and list them in a central SAP® monitor transaction.

Users can print labels manually by using predefined input masks on our automatically generated print transaction. For background printing (e.g. from SAP® messages, own transactions, user exits or external systems), customers can use our BAPIs or central function module.



KEY FEATURES



Central Management

Maintain and control all label processes in a central transaction embedded in SAP®.



Conditional Printing

Dynamic label content controlled with generic conditional records. Let your business department define the rules and decide what to print.



Powerful Designer

Using one of our powerful and professional layout Designers to design standard or customer specific label layouts.



Audit Trail

Revision control on label layouts and a full audit trail on all changes secures your processes. Centralized monitoring of print jobs in SAP®.



Multi Printer Support

More than 2500 supported thermal transfer printers, as well as all your existing printers. Use Unicode and printer independent labels.



Generic Data Content

Our application enables you to maintain and fetch specific label content. It offers multiple variants of print.

ENHANCEMENTS



EH&S Master Class

Get GHS/CLP relevant data out of SAP® Environment Health and Safety module with a powerful mapping tool without programming.



Matrix Maintenance

Enhance your label data without programming. Maintain e.g. customer or product specific data content in SAP®.



Self-Sufficient Printing

Our Line Print Agent is designed to print labels at a self-sufficient ISA-95 Level 2 environment.



Web Print Client

Provide your label solution over the internet to external manufacturers and partners. Print direct on remote client printers.



Professional Services

We provide comprehensive advice in the field of labelling. Our consultants are familiar with common standards like CLP, GHS, GS1 and many more.



Swiss Quality Software

We committed ourselves to a high standard in terms of software quality. Our processes are complied with ISO-9001 and aligned to GAMP.

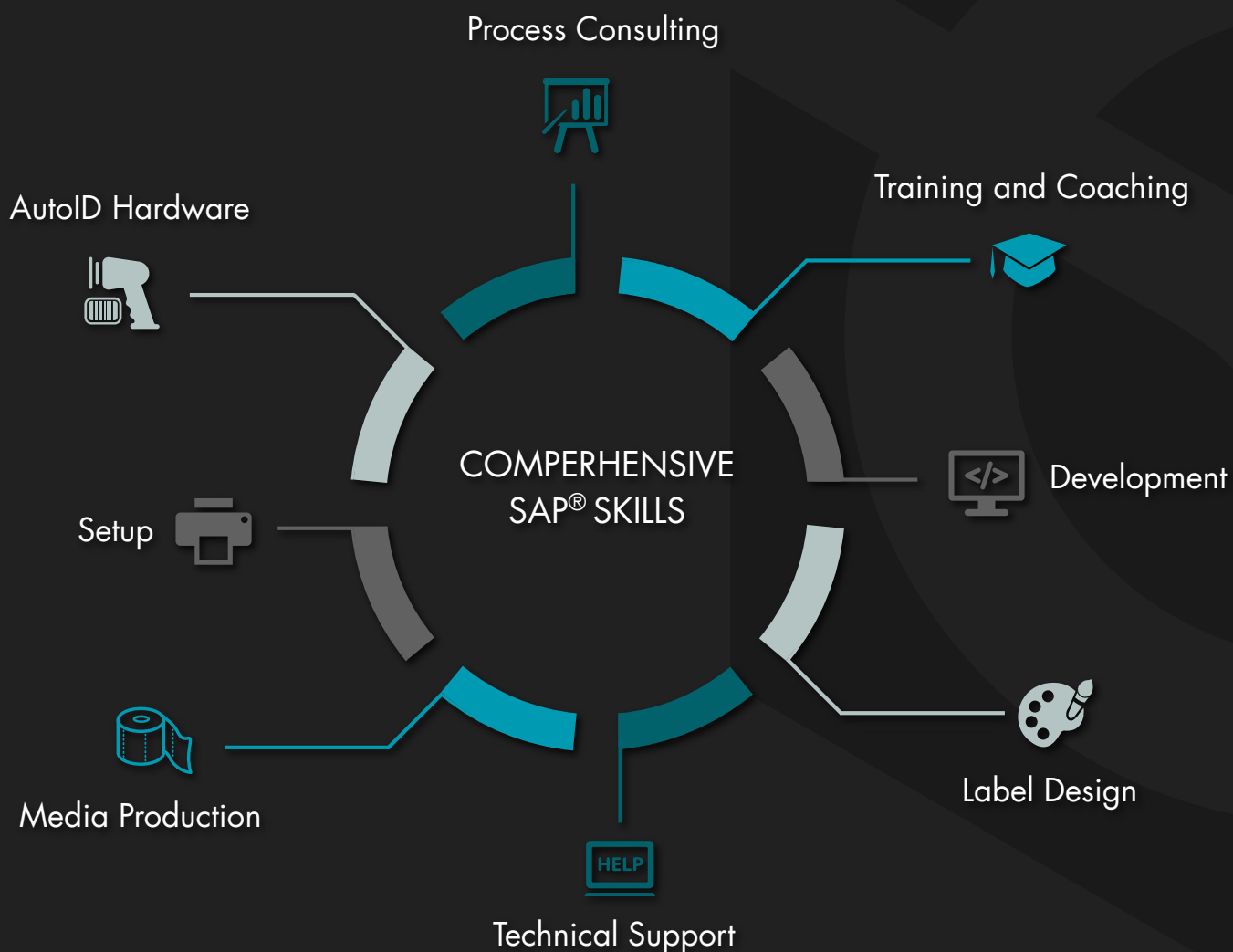


KNOW HOW

WE ARE PROFESSIONALS

OPAL Associates Holding AG, your AutoID system integrator and partner for AutoID and SAP® solutions, registered in Wetzikon (Switzerland), has been a global leader in the AutoID field since 1996.

OPAL focuses on integrated and innovative concepts and considers itself to be a service provider as well as a system integrator.

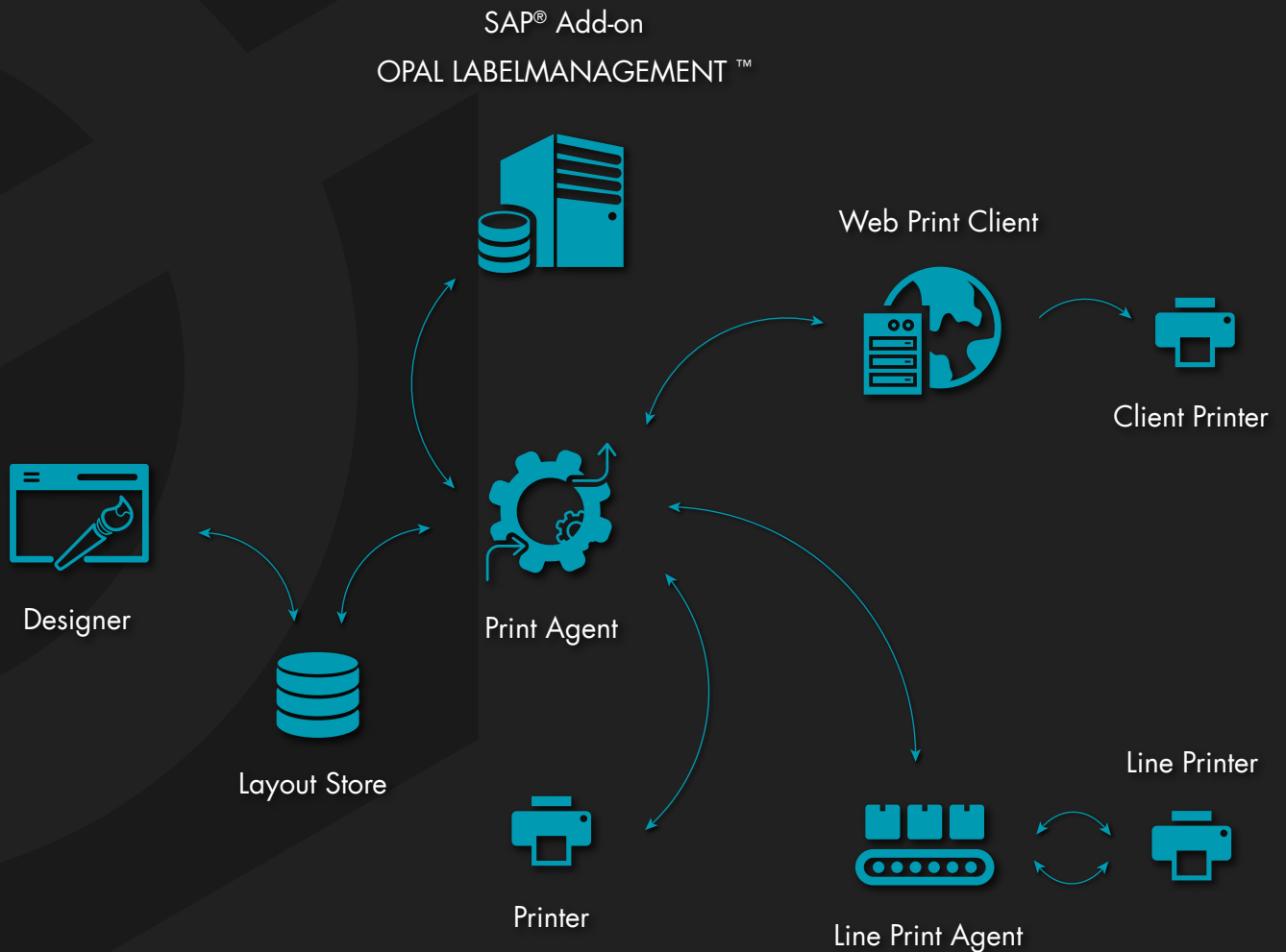


ARCHITECTURE

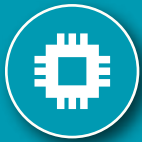
MAXIMUM OF FLELXIBILITY

All our applications are developed with the newest available technologies to maximize the performance and stability.

Different types of system landscapes (centralized, de-centralized or mixed) are supported and can be easily configured.



SOME REFERENCES



ELECTRONICS



CHEMICAL



PHARMA



AUTOMOTIVE



INDUSTRY



FOOD



OTHERS
